

FLUKE®

T5-600/T5-1000

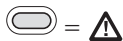
Electrical Tester

Instruction Card

⚠ Warning

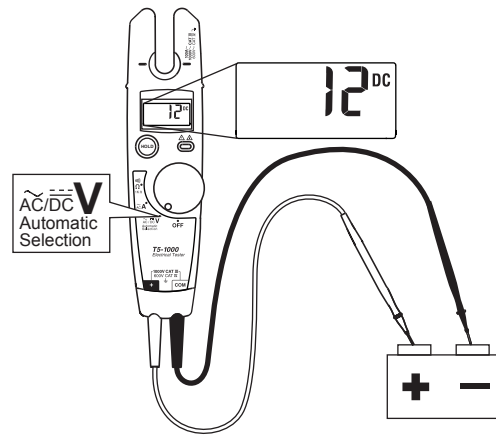
- Read the T5-600/T5-1000 Safety Sheet before using this tester.
- Před použitím této zkoušečky si přečtete bezpečnostní informace k modelu T5-600/T5-1000.
- Przed użyciem próbnika należy przeczytać instrukcje dotyczące bezpieczeństwa zamieszczone w dokumencie T5-600/T5-1000.
- Перед использованием данного измерительного прибора прочтите Инструкции по технике безопасности T5-600/T5-1000.
- Bu test cihazını kullanmadan önce T5-600/T5-1000 Güvenlik Broşürü'nü okuyun.

Voltage Indicator



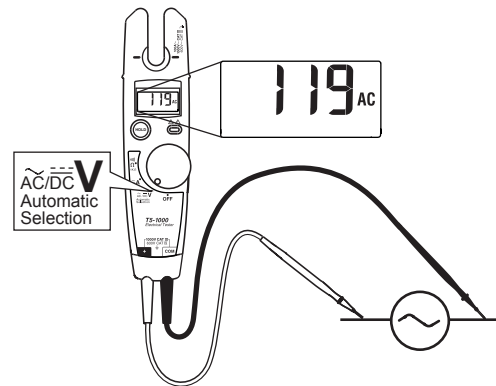
⎓ V

T5-600 max: 600 V CAT III
T5-1000 max: 1000 V CAT III, 600 V CAT IV

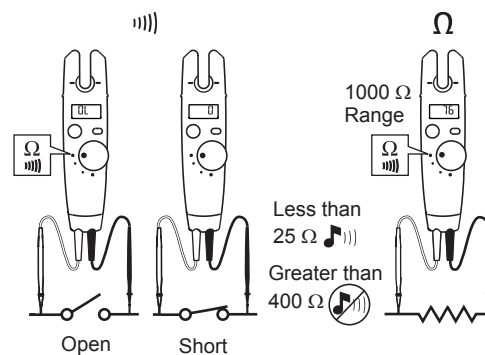


≈ V

45 Hz - 66 Hz
T5-600 max: 600 V rms CAT III
T5-1000 max: 1000 V rms CAT III, 600 V rms CAT IV

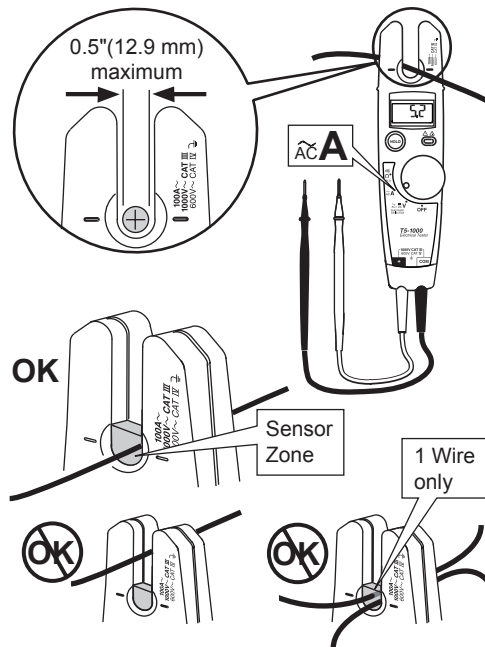


Continuity & Resistance Ω

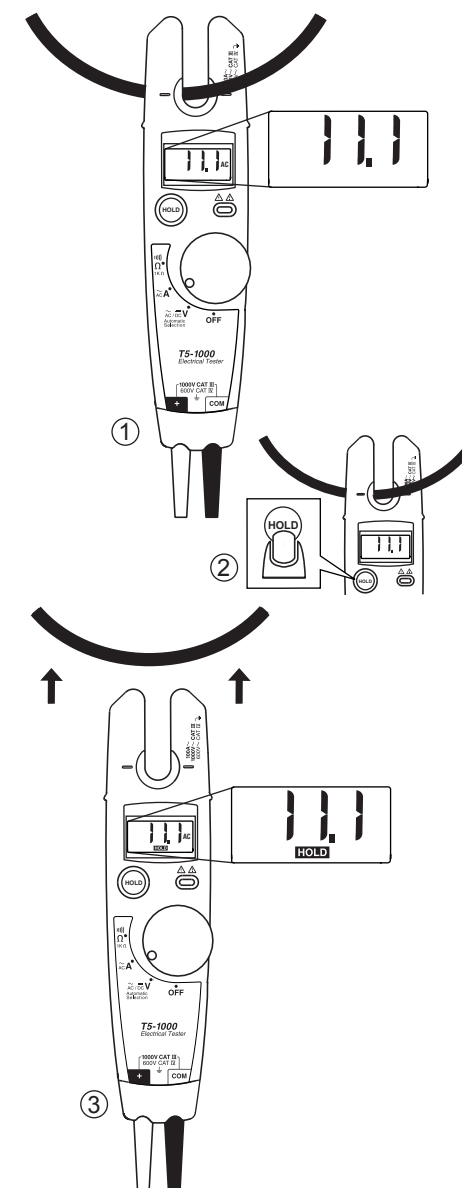


Less than 25 Ω
Greater than 400 Ω

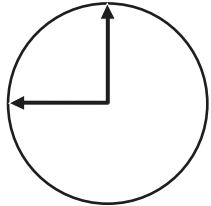
~A



Display HOLD

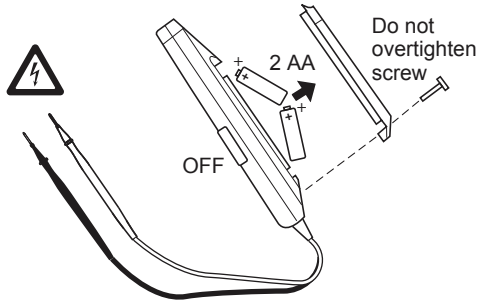


Auto Off



45 min

LO +



Warning

- Disconnect test leads from power source before opening battery door.
- Před otevřením krytu baterie odpojte od zdroje napájení měřicí přívody.
- Przed otwarciem wnęki baterii należy odłączyć przewody testowe od źródła zasilania.
- Перед тем как открыть крышку батарейного отсека, отсоедините измерительные провода.
- Pil караğını açmadan önce test iletkenlerinin güç kaynağıyla bağlantısını kesin.

Specifications

Specifications subject to change without notice.

Calibration	1-year calibration cycle
Temperature Operating: Storage:	-10 °C to +50 °C (14 °F to 122 °F) -30 °C to +60 °C (-22 °F to +140 °F)
Altitude Operating: Storage:	2000 m (6562 ft) 10,000 m (32808 ft)
Relative Humidity	0 % to 95 %, 5 °C to 30 °C (41 °F to 86 °F); 0 % to 75 %, 30 °C to 40 °C (86 °F to 104 °F); 0 % to 45 %, 40 °C to 50 °C (104 °F to 122 °F)
Battery Type and Life	AA (2); 360 hours continuous with alkaline; 125 hours continuous with zinc chloride
RF Field Specification	0.5 % full scale + (specified accuracy) at 3 V / m
Enclosure Rating	IP 52 per IEC 60529, no vacuum applied
Safety	Complies with ANSI/ISA-S82.01-94, UL classified to IEC 61010, CSA/CAN C22.2 No.1010.1-92, and EN 61010-1: 1995.
EMC	EN 61326
Temperature coefficient	0.1 x (specified accuracy) / °C for <18 °C or >28 °C (< 64.4 °F or > 82.4 °F)
Accuracy	± ([% of reading] + [number of least significant digits]) Accuracy is specified for 1 year after calibration, at 18 °C to 28 °C (64 °F to 82 °F) with relative humidity to 90 %. AC conversions are ac-coupled, average responding, and calibrated to the rms value of a sine wave input.
CAT III protects against transients in a <i>fixed equipment installation</i> such as a distribution panel, and lighting systems in large buildings.	
CAT IV protects against transients from a <i>primary supply</i> such as an electricity meter or an overhead or underground utility service.	

Function	T5-600 Range	T5-1000 Range	Resolution	Accuracy
V̄	600 V rms	1000 V rms	1 V	± (1.5 % + 2 digits)
V̄	600 V	1000 V	1 V	± (1 % + 1 digit)
Ā	100.0 A	100.0 A	0.1 A	± (3 % + 3 digits)
	1000 V CAT III 600 V CAT IV			
Ω	1000	1000	1	± (1 % + 2 digits)

Certifications:	CE	SR	UL CLASSIFIED In accordance with IEC 61010-1, 54CJ
------------------------	----	----	---

Replacement Parts

Test Lead Assembly. Replace only with Fluke double-insulated leads (□). See "Accessories" for available probes.	PN 648029
Battery Door	PN 2091779
Battery Door Screw	PN 1618578

Accessories

H5 Belt Holster
TP1 Probe Set, Flat-Blade
AC285 SureGrip™ Alligator Clips
AC220 SureGrip™ Alligator Clips
Service Information Sheet, PN 686953

To contact Fluke, call:

USA: 1-888-99-FLUKE (1-888-993-5853)
Canada: 1-800-36-FLUKE (1-800-363-5853)
Europe: +31 402-675-200
Japan: +81-3-3434-0181
Singapore: +65-738-5655
Anywhere in the world: +1-425-446-5500

Visit Fluke's Web site at www.fluke.com.